



SCARECROWS IN THE GARDENS

WHAT IS *SCARECROWS IN THE GARDENS*?

Annual design competition

- Every October
- Schools, organizations, and individuals all participate

Build scarecrows during September, display during October.

- Submissions are judged and awards handed out.
- Yearly theme.
- Scarecrows judged based on creativity and adherence to theme.
- 2023 theme is “scarecrows imitate art.”
 - Scarecrows are designed to mimic famous art pieces!

DESIGNING YOUR SCARECROW TO LAST

2 main concerns:

Weatherproofing

- Scarecrows must endure weather.
- DABG will not repair submissions
 - Repairs are up to creators.
- Avoid tinsel
 - Rapidly tangles, strands break off.
- Treat silk plants with caution
 - May drop leaves during storms.

Visitor-proofing

- Young guests may damage scarecrows.
- Every aspect of scarecrow design should be focused on holding the scarecrow together as well as looking good.

DESIGNING YOUR ARMATURE

Armature acts as a “skeleton” to support the rest of the scarecrow.

- Widely used by sculptors around the world.
- Can be made of any sturdy, form-keeping material.
- At DABG, PVC pipes used as armatures for scarecrows. Inexpensive and durable.

PVC pipes fit over rebar driven into ground

- Improved stability
 - PVC armatures not required.
 - Scarecrows must be stable in wind.

BUILDING YOUR ARMATURE PART 2

Standard armature made of 1/2" PVC pipe.

Required parts:

PVC Pipe

a way to cut the PVC pipe

PVC glue

A few types of joint

1 cross joint

1 tee joint

assorted elbow joints (amount varies by pose).

15 feet of PVC pipe will make one 6' tall person-shaped armature.

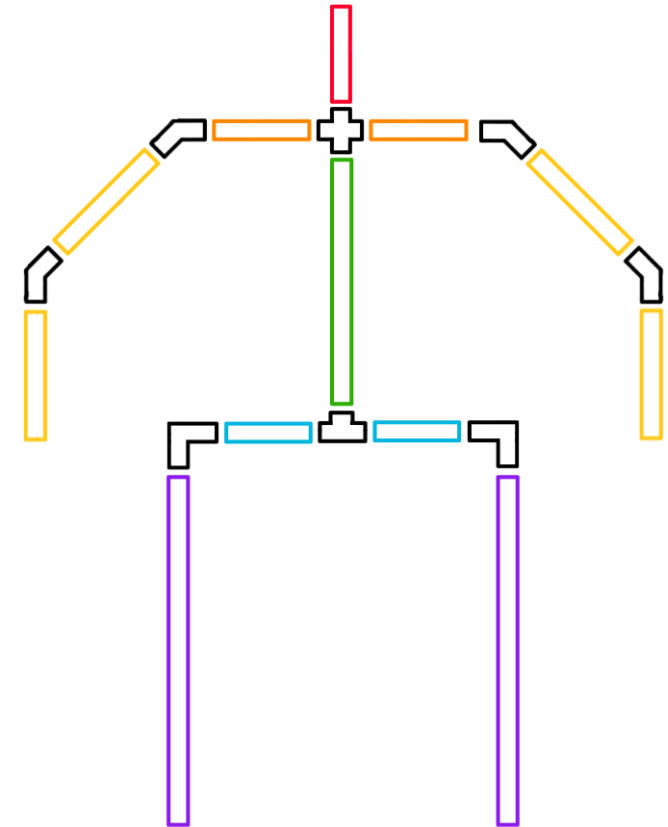
- You may need more PVC fittings than listed here if you're making a complex pose!

The neck should always be at least 6" long so it can support the head well.

- Sizes listed in table on right are in inches.

Hip and leg joints **MUST** be glued!

- Otherwise scarecrow *will* bend over in the weather.
- Recommend gluing all joints, though this may not be practical at first (like during dressing).



	Neck	Shoulders	Arms	Spine	Hips	Legs
Large adult	8	4	9-10	18	3	36
Small adult	8	3	7-8	15	3	32
Large Child	8	3	6-7	12	2	28
Small Child	8	2	5-6	11	2	17

PADDING YOUR ARMATURE

Padding materials are diverse

Must be waterproof

- Avoid using things like newspaper or straw to pad your scarecrow.
 - Lose their form in the rain and may leach color.

To bulk torso:

- Bubble wrap
- plastic bags
- Empty plastic bottles

For arms

- Pool noodles
- Bubble wrap

No hard rules for padding. Experiment!

DRESSING YOUR SCARECROW

Outfits determine personality

- Thrifting is a great way to assemble outfits!
- Avoid using 100% cotton
 - Can degrade in sun.
 - Polyester blends are often more durable.

Hands can be made easily with gloves.

- Use cloth or leather gloves
 - thin gloves (like surgical gloves) fall apart too quickly.

Shoes: Most shoes will work just fine. You will probably have to put a hole in the heel of at least one shoe so the scarecrow's armature can be mounted on the rebar.

THE HEAD

Most important part

- First thing people look at.
- Extra critical that it “looks right.”

Avoid mannequin heads

- Often look cheap or uncanny.

Use other head-shaped objects:

- Vases, pots, milk jugs, soda bottles, plastic gourds, etc.
 - Lots of room for abstraction here.
- Raised facial features, can be added with epoxy clay.
 - May not be necessary! Try gluing an object in place of the facial feature you want to add.
 - Self-drying clays are not fully waterproof. Must use an oven-bake clay or an epoxy clay.
- Don't use real vegetation; it will rot before the event is over.
- Attach things to your scarecrow using weather-resistant glue like superglue.

HAIR

Many options to portray hair:

- shredded plastic, shredded cloth, moss, raffia, old mop head.
- For characters with a head covering, you may not need to add hair at all.
- Avoid finely-textured wigs with “real hair” texture.
 - May not handle weather well.
- Focus more on suggesting hair than creating an accurate mimicry.